

TOTAL UNITY. TOTAL CONTROL.



LightHouse™

TOTAL UNITY. TOTAL CONTROL.

IF YOU REALLY WANT TO DO SECURITY RIGHT, YOU NEED A PLATFORM THAT UNITES
YOUR ENTIRE SECURITY SYSTEM, ONE THAT LETS YOU MONITOR AND
CONTROL EVERY COMPONENT THROUGH A
SINGLE POWERFUL INTERFACE.

Welcome to LightHouse™
Security Control.

TOTAL UNITY.
TOTAL CONTROL.
TOTAL PROTECTION.



LightHouse™



THE FUTURE OF SECURITY.

LightHouse is designed from the ground up to accommodate virtually any device or subsystem on the market and bring together all the media, data and functionality you need, seamlessly in an intuitively-designed graphic environment.

With a framework built on extensibility and complete integration, LightHouse will continue to meet your needs as technology evolves and security requirements change.

UNIFICATION offers SIMPLICITY

When all the data generated by every device in every facility throughout your organization comes together within a unified and well-organized interface, the task of tracking, controlling, responding to events and maintaining records becomes much simpler. That's the power of unification – and a distinct advantage of the LightHouse platform.

LightHouse is designed and programmed to accommodate virtually any device or subsystem imaginable, not only within your security system, but throughout your entire enterprise. Alarms, doors, intercoms, cameras, building management devices, lighting controls, telephones . . . LightHouse can support virtually any electronic device or system operating on practically any protocol, giving you the highest possible level of unification and control.

This unification and control capability is especially powerful in organizations where multiple systems – such as IT, personnel management, network security, HVAC and even manufacturing systems – interact and share information. Each security device or subsystem is connected to the overall system through a “Portal,” and devices with similar characteristics can be grouped for easier management.

LightHouse also takes unification beyond the system level. If you have multiple LightHouse-controlled security systems operating at separate facilities or campuses, a user with the proper permissions can connect to any or all of them simultaneously. Users can also control and manage multiple systems via any authorized workstation anywhere in the world.

EXTENSIBILITY creates a FUTURE-PROOF PLATFORM

LightHouse has a modular design based on Microsoft's latest .NET technology. This design utilizes a flexible XML message structure as well as dynamic XAML-coded controls and layouts. All this makes the platform extremely accommodating to the long-term needs of any user.

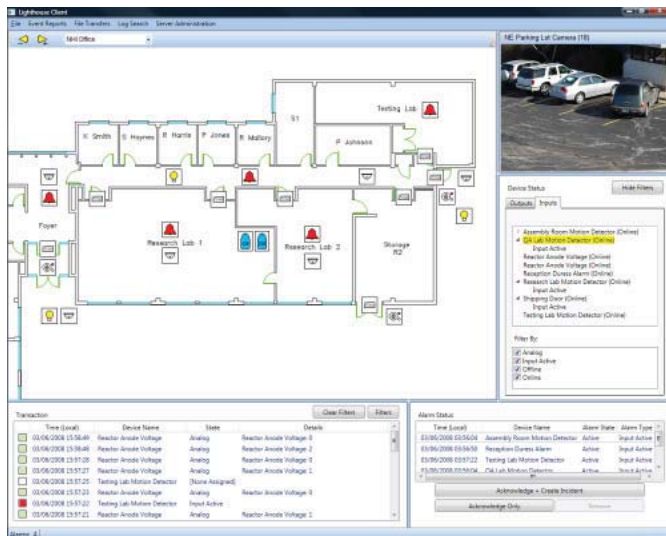
The platform's basic graphics package supports most standard formats, including AutoCad® (dwg and dxf) and file formats such as .bmp, .jpg, .gif and .tif. LightHouse is capable of supporting new graphic formats as they are developed and lets you add features to support the needs of your application.

USER-MANAGEMENT & ENCRYPTION equals BETTER SECURITY

If the security system itself is vulnerable to abuse, eavesdropping or other unauthorized activities everything else is a moot point. That's why LightHouse uses a robust protocol of superior authentication and encryption methods to ensure that your system is secure.

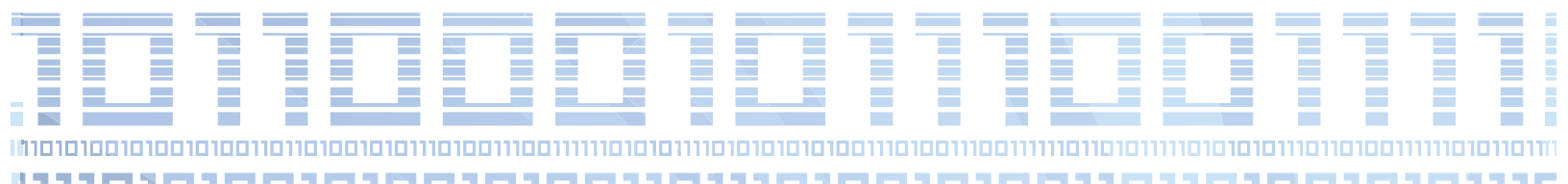
The LightHouse Server lets you assign each user a number of profiles that determine which functions the user can perform, which devices the user can access, and even the hours during which the user is authorized to use the system. You can also take advantage of user group functionality to assign or change permissions for any number of users at once. The LightHouse Server manages its own client connections, each of which is authorized through an assigned user profile with corresponding permissions.

Finally, all communications between the client and the LightHouse Server are authenticated and encrypted using the latest, most secure algorithms such as Advanced Encryption Standard (AES), and all users negotiate asymmetric key encryption using RSA with advanced authentication.

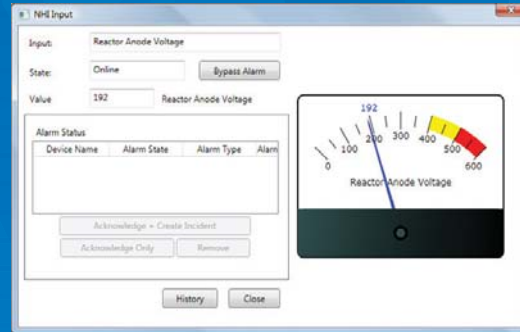


THE LIGHTHOUSE CLIENT PROVIDES A CONSISTENT, EASY-TO-USE INTERFACE FOR MONITOR AND CONTROL OF EVERY DEVICE ON THE SYSTEM.

EXTENSIVE USE OF "DRAG-AND-DROP" LETS THE USER EASILY ACCESS DATA AND A LARGE LIBRARY OF CONTROLS ALLOWS THE USER TO CUSTOMIZE THE SCREEN LAYOUT AS DESIRED.



LightHouse supports analog devices and data can be displayed using a variety of controls, such as meters, gauges and bar graphs. Thresholds can be set to trigger alarms if the value exceeds upper and/or lower limits. System events can be triggered in response to changing analog values and timed events, allowing your "security system" to perform building management functions.



SYNCHRONIZATION translates into POWER

LightHouse's scheduling functionality can be used to time automatic actions like turning on lights or bypassing certain alarms. The schedules you create, and the numbers or types of devices controlled by the schedules, are virtually limitless. The actions can be scheduled as repeating events to occur on a daily or weekly basis – or as one-time events at any date and time the user chooses, even years in advance.

With the development of a global marketplace, a growing number of organizations require a system that can accommodate globalization in a secure and logically managed environment. LightHouse provides

time zone reconciliation and management so that users, devices, schedules, events, incidents and reporting can all be managed and logically presented to the user. There is no need for an operator to calculate or decipher time zone differentials on the system, LightHouse manages this for you.

LightHouse also supports rules-based management with plug-in components. These specialized software components make it possible to create customized functionality in your system, whereby an event or combination of events can trigger an action in another part of the system.

ADVANCED INTERFACE enables EASE OF CONTROL

The LightHouse Graphical Client workstation is highly intuitive, enabling users to navigate and control their security system with ease, speed and precision. Each device can be clearly represented by a device icon, hotspot or perimeter.

Using a mouse, touchscreen or keyboard, the user can select the device or simply mouse over the icon to bring up a form indicating the devices status or other information. A simple click accesses the control. To view live video from any camera, the user simply drags the corresponding object to a video display window.

LightHouse uses advanced icon capabilities (through Icon Plug-ins) to help users visualize the security system and all its components from any perspective or zoom level. Available icon styles include vector-based icons that scale as the user zooms in and out, transparent and semi-transparent hot spots, and perimeters (e.g. fence segments) among others. An extensive library of icons is provided and an icon editor for each Icon Plug-in lets you create and edit the type of icon best suited to your system.

A large library of controls, such as status lists, map windows, video windows and transaction lists are provided to meet the unique requirements of any user. In addition, custom controls can be provided. Screen layouts can be configured as desired on multiple monitors.



BUILT-IN EVENT HANDLING for IMPROVED SECURITY MANAGEMENT

Rather than just inform the operator of incidents like alarms, LightHouse offers advanced incident management capabilities that allow the operator to acknowledge or silence the alarm while keeping the incident active. Operator activities and devices associated with the incident are time stamped and logged. Detailed incident reports can be accessed at any time, and additional information can be added without compromising the integrity of the previous content.

Users can access any event by calling up an incident list, clicking on a graphical object that corresponds to the event or selecting the event from a transactions window. Pre-defined entries are available to expedite reporting but can always be overridden. When the incident is resolved, it can be closed, and the associated audio and video is saved with the report. Users with the proper permissions can re-open events for review and add data at any time.

DO SECURITY RIGHT. SECURITY IN ONE INTERFACE WITH TOTAL UNITY AND TOTAL CONTROL.

