

Easy-to-Use Security Workstation Graphics Package

The LightHouse™ Graphics Package is an intuitive user interface for monitoring and controlling security system functions. Using a mouse, touchscreen, or keyboard the user can control any device (providing he or she has been assigned permissions for that device). The user can click on (or if desired, simply “fly over”) a graphical object (icon, hotspot, or perimeter outline) representing the device and a form will be displayed showing status and allowing control of the device, such as a door, gate, camera, card reader, light, alarm point and so forth. Graphical objects representing cameras can be dragged into a video display window to begin viewing live video from that camera.

The screenshot displays the LightHouse Security Workstation interface. The main window shows a detailed floor plan of an office area with various rooms labeled, including a Break Room, Conference Room, Reception, and several offices. A zoom level of 1.00:1 is indicated. On the right side, there is a 'System Device Status' table with columns for Time, Status, and Device. Below the floor plan, there is a table showing access logs with columns for Time, Door, Status, and Cardholder. The bottom status bar shows 'System Online' and 'User: Robert Janowski Friday June 16 06:03:52'.

Time	Status	Device
06:01:53	Unlocked	Accounting
05:58:21	Unlocked	Main Door
05:45:00	Bypassed	Accounting Motion Alarm
05:45:00	Bypassed	Corridor Motion Alarm
05:45:00	Bypassed	Lobby Motion Alarm
05:45:00	Bypassed	Maintenance Rm. Motoin
05:45:00	Unlocked	West Door
05:45:00	Unlocked	Corridor East Door
05:40:02	Recording	South Entrance Camera
05:36:04	Unsecure	Corridor West Door
05:30:00	Activated	South Side Lights

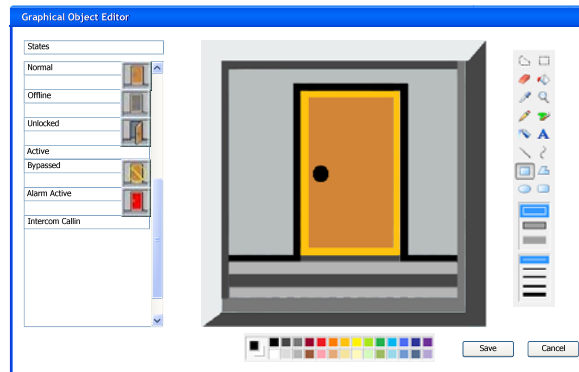
Time	Door	Status	Cardholder
06:02:53	West Door	Access	Jones, Samuel #349398
06:00:32	West Door	Access	Reynolds, Gene #939231
05:58:28	Back Door	Access	Hoffner, James #628831
05:56:03	Security Office	Access	Jones, Samuel #349398
05:51:47	Computer Room Door	Rejected	Bonds, Barry #492193 - REJECTED: Invalid timezone
05:48:39	Maintenance Corridor 6	Access	Simmons, Robert #472931

Advanced Fast Graphics

The LightHouse™ Graphics Package uses Map Window Plug-ins to support different graphical formats, such as raster formats (bitmaps, JPEG, GIF, etc.) and vector formats (AutoCAD™, MicroStation™, SVG, GIS mapping, etc.). This means that LightHouse™ will be able to support new mapping formats as they become available, and the user can purchase the plug-ins needed for their application.

Advanced Graphical Objects

**LightHouse™** uses Graphical Object Plug-in to display various “icons” to represent devices. Examples include vector-based 2D icons that can scale as the map is zoomed in or out, 3D icons that scale and change perspective with the image, animated icons (such as doors that open and close), transparent or semi-transparent “hot spots”, and perimeter outline objects to represent things such as fences. An editor is included for each Graphical Object Plug-in to allow users to create and edit their own graphical objects. Users can select the type of graphical objects appropriate for their system.



2D Vector Icon Editor

- Vector-based icons (graphical objects) that scale as the user zooms in or out on the map. Maximum size can be set (on zoom in), as well as a threshold below which the icons disappear (on zoom out). Icon images stay sharp and clear no matter what size and/or zoom factor is used.
- CAD-type icon editor allows administrators to create and edit icons. Individual elements (lines, rectangles, ellipses, arcs, text, etc.) in an icon can be moved, scaled, color changed, moved in front of or behind other elements. Supports copy and paste to save time.
- Users can embed bitmap images (such as bmp and jpg) in icons (though they will not stay sharp and clear when scaled). Users can also embed animations in icons.
- Icons can have transparent or colored backgrounds, creating ‘hot spots’ overlaid on map.
- Each state (alarm, unlocked, bypassed, etc.) has its own image. Users can create unique images to better display the state, rather than simply having a different background color for each state.
- Additional plug-ins provide support for transparent/semi-transparent hot spots, as well as a perimeter-type ‘icon’ for fences or larger areas like floors or complete buildings.
-

User Configurable Screen Layouts

The LightHouse™ Graphics Package- Graphical Client Workstation layout is user-configurable and can be displayed on as many monitors as the PC can support (typically 1 to 4, but up to 16). Each user can have his or her individual layout on any Graphical Client Workstation. The layout for a user can even be changed by schedule!



The LightHouse™ Graphics Package -Graphical Client Workstation can host multiple map windows, device status windows, video display windows, transaction windows, and so forth. Most Portals also include windows specific to their use. For example, the Access Control Portal includes transaction windows, cardholder information windows and rejected card alert windows. This feature allows for the ultimate in configurability and flexibility.

**Incident Report**

Incident Name: Gate 1 Tarmac Door 06/16/2006 05:23:45 Door Forced Alarm

Device: Gate 1 Tarmac Door Current User: R. Janowski

Action Taken: Officer reports incident closed

Dispatched Officer Name: Samuel Johnson

Incident Type: Genuine alarm

Incident closed. Intruder taken into custody by police. Officers Johnson and Hoffner returned to patrol.

	Date/Time	User	Event	Action taken
View	06/16 05:23:45		Alarm active	Door forced alarm
View	06/16 05:23:52	R. Janowski	Dispatched	S. Johnson to investigate
View	06/16 05:25:38	R. Janowski	Report	S. Johnson detains individual
View	06/16 05:26:31	R. Janowski	Report	Backup arrives. J. Hoffner
View	06/16 05:57:52	R. Janowski	Report	Individual turned over to police.
View				
View				

Live Video Review Video Continue Close

Since the **LightHouse™ Graphics Package** -Graphical Client Workstation is built using the latest .NET XAML technologies, we can provide controls with a custom look and feel for a user interface unique to each customer (additional cost may apply)

### ***Secure Communications***

The **LightHouse™ Graphics Package** -Graphical Client Workstation complements the **LightHouse™** data security features. Communication with the **LightHouse™ server** is securely encrypted and authenticated. User logon and authentication is HSPD-12 compliant (using a Smart Card reader).

### ***Advanced Alarm Handling and Built-in Incident Management***

The **LightHouse™ Graphics Package** -Graphical Client Workstation provides advanced alarm handling capabilities. Users can respond to alarm events using event lists, clicking on Graphical Objects representing alarm devices, or selecting the event from a transactions window. Alarms are prioritized and each User (Profile) can have different alarm priorities for the same device, even different priorities based on Schedule.

Incident Management capabilities are built in to the **LightHouse™ Graphics Package** -Graphical Client Workstation. Rather than simply acknowledging an alarm as on some other systems, Users can respond to the alarm (silence it) while keeping the alarm (incident) active. Officers can be dispatched to investigate the situation, report their findings and resolution of the problem and this data can be added into the incident. If the incident management form is closed, Users can access it by clicking on the Graphical Object again to review it or make further entries. Once the incident has been resolved, the incident can be closed.

Predefined entries make it easy and fast for Users to add information, and the predefined entries can be over-ridden as needed. Additionally, any audio or video associated with the incident is saved with the incident report.

**Incident Report**

Incident Name: Gate 1 Tarmac Door 06/16/2006 05:23:45 Door Forced Alarm

Device: Gate 1 Tarmac Door      Current User: R. Janowski

Action Taken:  
 Officer reports incident closed

Dispatched Officer Name: Samuel Johnson

Incident Type:  
 Genuine alarm  
 False alarm  
 Equipment failure

Incident closed. Intruder taken into custody by police. Officers Johnson and Hoffner returned to patrol.

Incident History

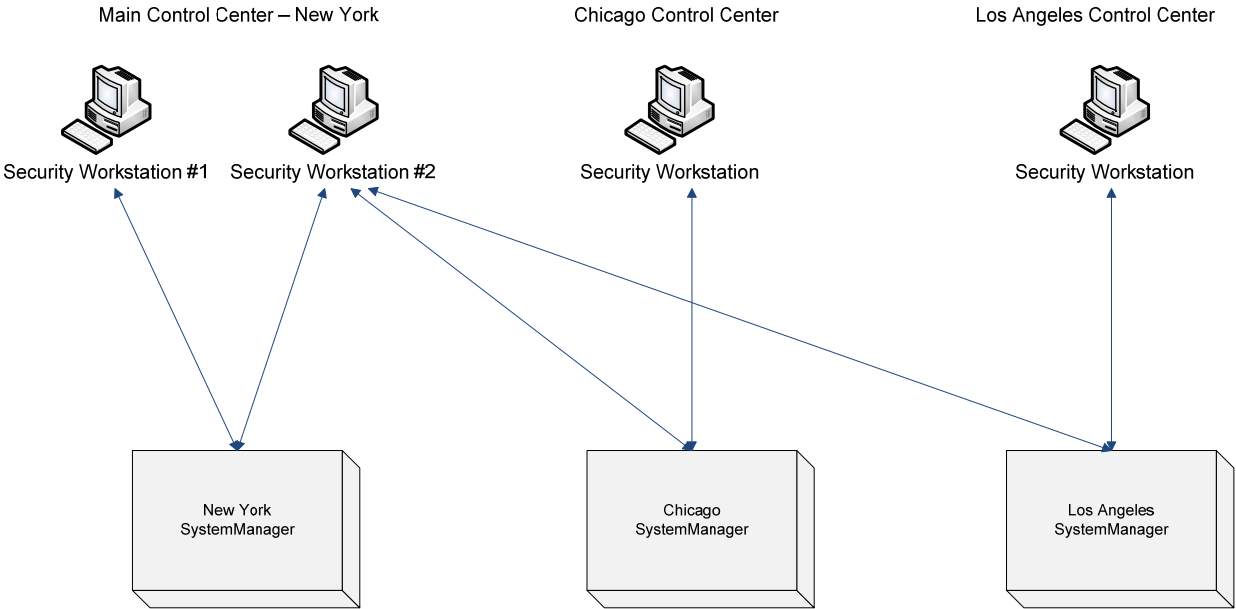
	Date/Time	User	Event	Action taken
View	06/16 05:23:45		Alarm active	Door forced alarm
View	06/16 05:23:52	R. Janowski	Dispatched	S. Johnson to investigate
View	06/16 05:25:38	R. Janowski	Report	S. Johnson detains individual
View	06/16 05:26:31	R. Janowski	Report	Backup arrives. J. Hoffner
View	06/16 05:57:52	R. Janowski	Report	Individual turned over to police.
View				
View				

Add Action      Live Video      Review Video      Continue      Close

Incident reports can be access with the log report generator, allowing Users to quickly review incidents, including the associated audio and video files.

**Advanced Networking and Remote Monitoring Capabilities**

Each **LightHouse™ Graphics Package** -Graphical Client Workstation can connect to multiple *System Managers*, thus allowing for centralized control of systems distributed over any geographical area. Users can log on and off of *System Managers* as desired, inherently providing features such as emergency site takeover and backup monitoring.



The **LightHouse™ Graphics Package** -Graphical Client Workstation offers unparalleled layout flexibility, user-friendliness, and extensibility as needs change and grow. It is the perfect user interface for a unified security system built with **LightHouse™**.

**LightHouse™ Graphics Package -Graphical Client Workstation Specifications**

Monitors

Number of monitors supported:	Limited by PC hardware configuration
Number of windows per monitor:	Limited by monitor resolution and usable space

Graphical Objects

Number of Graphical Objects:	Unlimited
Number per map:	Limited by monitor resolution and usable space

Graphical Maps

Number of maps:	Unlimited
Map formats*:	
Raster:	bmp, jpg, gif, tif
Vector:	AutoCAD (dwg, dxf), MicroStation (dgn), SVG, GIS

On-screen components such as map display windows, transaction windows, status windows, video monitor windows and device control windows (such as camera controls) are available. In addition, we can customize the controls for a look and feel unique to a particular customer (on request, at additional cost).

- Raster map formats (bmp, jpg, gif, tif) and AutoCAD™ (dwg & dxf) are provided with the standard graphics package.
- Additional formats such as GIS, MicroStation™ (dgn) and others are available on the optional Enhanced LightHouse™ Graphics Package- call for pricing and availability.