

## Compression

- H.264
- MPEG 4
- JPEG
- MJPEG

# SAVvault™

## VMS/NVR

## Storage

- Internal/Local
- NAS
- SAN



## OS

- Windows OS
  - 7 SP1
  - 8.1
  - 10
- Windows Server
  - 2008 R2 SP1
  - 2012
  - 2012 R2
  - 2016

## Open Platform

- LightHouse™  
PSIM Ready
- API for other 3rd party development



**Network**  
Harbor, inc.

[www.SAVvault.com](http://www.SAVvault.com)

## Hybrid NVR/DVR

- IP Cameras
- \* H.264, MPEG4, JPEG, MJPEG formats
- Analog Cameras
- \* Axis Encoders & Blade Servers



## Bundled NVR Systems

- Local 2,4,6 and 9 TB
- SAS/ High-Speed RAID 5/6
- VMS/NVR Software Suite
- 64 Camera License
- Enterprise Ready
- LightHouse™ Ready

There are no limits to the number of NVR's that can be added to SAVvault™ VMS

## Extended NAS Storage

- 1U Rack unit -4 drive
- ⇒ Up to 6 TB RAID 6
- (2) 1U Rack -8 drive
- ⇒ Up to 21 TB RAID 6
- 2U Rack - 10 drive
- ⇒ Up to 24 TB RAID 6
- (3) 2U Rack - 34 drive
- ⇒ Up to 96 TB RAID 6

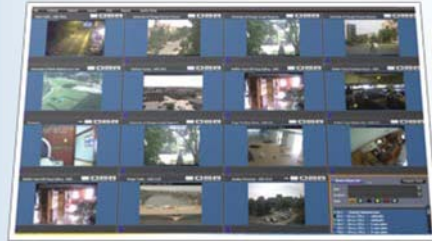
## Extended SAN Storage

- Peer Architecture
- Simplified Video Storage
- Flexible Expansion
- Virtualized/Equalized
- Can Integrate with NAS
- 10 GbE technology

For more information on any of our products or services, please visit us on the Web at:

[www.SAVvault.com](http://www.SAVvault.com)

# Features & Benefits



**Video Walls**



**Command Center Integration**

Video arrays can be defined for display. The arrays can be called by operator or automatically called on alarm event.

Pre-defined camera population and/or camera sequences can be assigned to the arrays for alarm management.

Alarms generated by the cameras such as motion detection, video loss and more can also be generated and received by SAVvault™.

SAVvault™ can also send alarm and other information to external systems via the API.

## SAVvault™ is LightHouse™ Ready.

LightHouse™ is the world's leading PSIM/ Building Management/Environmental integration platform that has achieved FIPS 140-2 validation. When SAVvault™ is integrated with LightHouse™, full integration and system interoperability with access control, audio, environmental, alarm, mass notification systems and more are all available.

SAVvault™ offers a full API for system integration and OEM solutions for 3rd party development.

The SAVvault™ VMS/NVR is the premium leader in video management solutions. Whether using SAVvault™ as a single stand-alone NVR, or as a multi-unit distributed enterprise system, SAVvault™ is the absolute solution.

SAVvault™ provides robust features regardless of the system size. Using true server-client architecture, systems can scale with expansion as needed. Every NVR connected is transparent to the system and appears as one common NVR to the user.

SAVvault™ provides all of the standard control features such as pan/tilt/zoom and preset control, and in addition, provides the enhanced management features on both local and /or enterprise level.

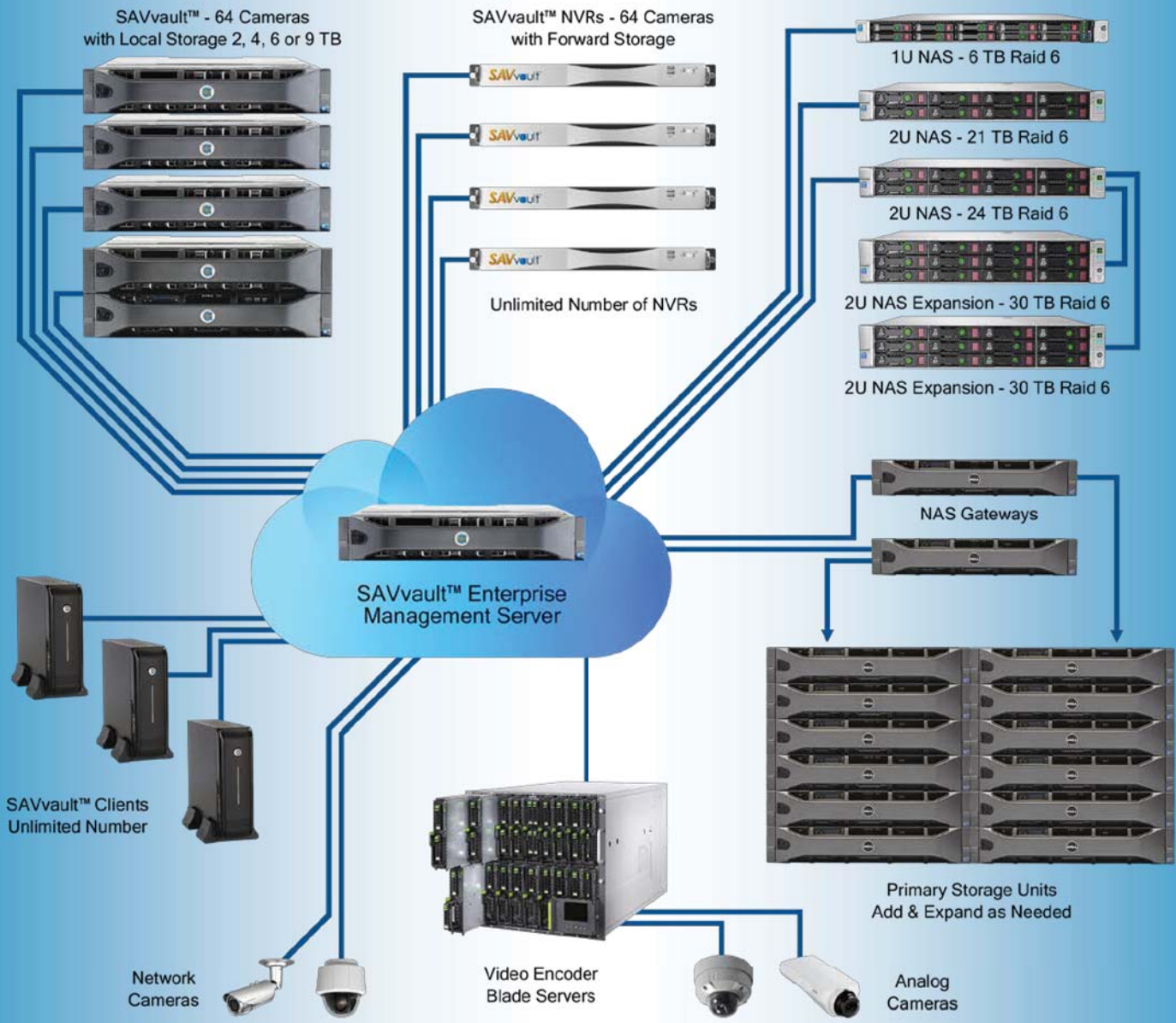
SAVvault™ provides advanced Features such as IP camera group calls (salvos), and camera sequences that are structured across the enterprise, and when combined with alarm management it enables call to view and/or recording of single cameras, salvos, and sequences.



**SAVvault™**

[www.SAVvault.com](http://www.SAVvault.com)

# SAVvault™



**Network Harbor Inc.**  
[www.SAVvault.com](http://www.SAVvault.com)